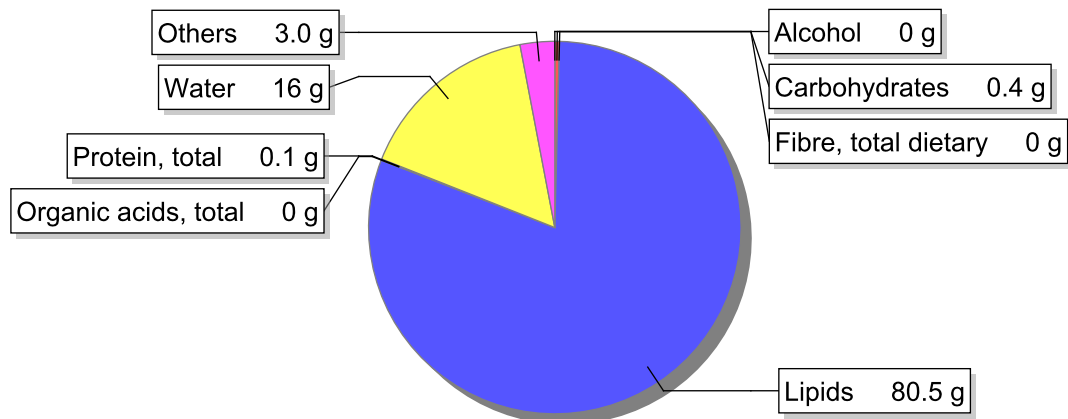


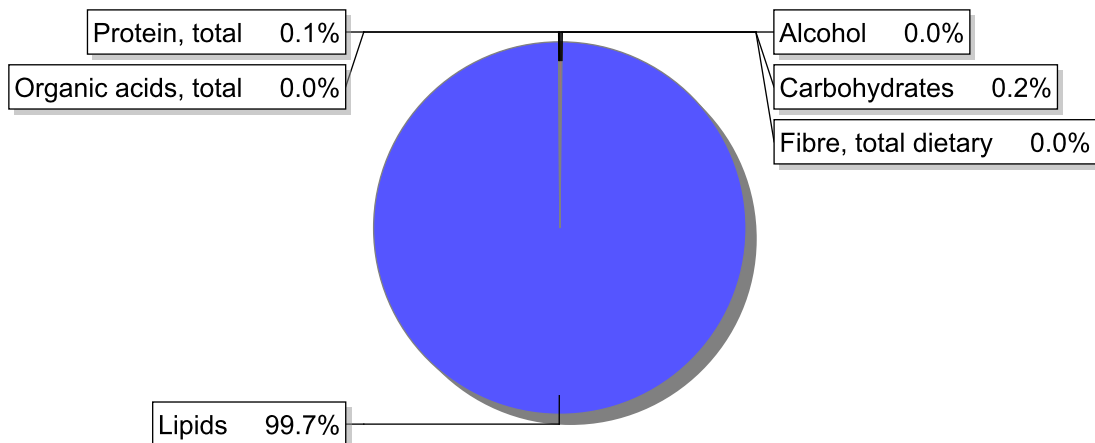
Food

Name: Margarine, industry pastry, with salt
Group: Olive oil, oils and fats
Subgroup: Fats
Edible Part: 100%
Code: IS379
FoodEX2 Code: A039G

Composition [g/100g]



Energy



Nutritive content per 100g edible portion

Name	Value	Unit	Source(s)
energy kcal, total metabolisable	727	kcal	
energy kJ, total metabolisable	2990	kJ	
fatty acids, total saturated	34.7	g	
fatty acids, total monounsaturated	25.7	g	
fatty acids, total polyunsaturated	15.1	g	
fatty acid 18:2 n-6 cis,cis	14.0	g	
fatty acids, total trans	3.6	g	
sugars, total	0.4	g	
sucrose	0	g	

Name	Value	Unit	Source(s)
lactose	0.4	g	
oligosaccharides, available	0	g	
fibre, total dietary	0	g	
protein, total	0.1	g	
alcohol	0	g	
water	16	g	
organic acids, total	0	g	
cholesterol	225	mg	
vitamin A; retinol equiv from retinol and carotenoid activities	157	µg	
carotene, total (vitamin A precursors)	0	µg	
vitamin D	0	µg	
alpha-tocopherol	0	mg	
thiamin	0	mg	
riboflavin	0	mg	
niacin, preformed	0	mg	
niacin equivalents, total	0	mg	
niacin equivalents from tryptophan	0	mg	
vitamin B-6, total	0	mg	
vitamin B-12	0	µg	
vitamin C	0	mg	
folate, total	0	µg	
ash	3.30	g	
sodium	1200	mg	
potassium	6	mg	
calcium	3	mg	
phosphorus	6	mg	
magnesium	1	mg	
iron, total	0.3	mg	
zinc	0.1	mg	

Legend

Code	Name
g	gram
kJ	kilojoule
kcal	kilocalorie
mg	milligram
µg	microgram

References