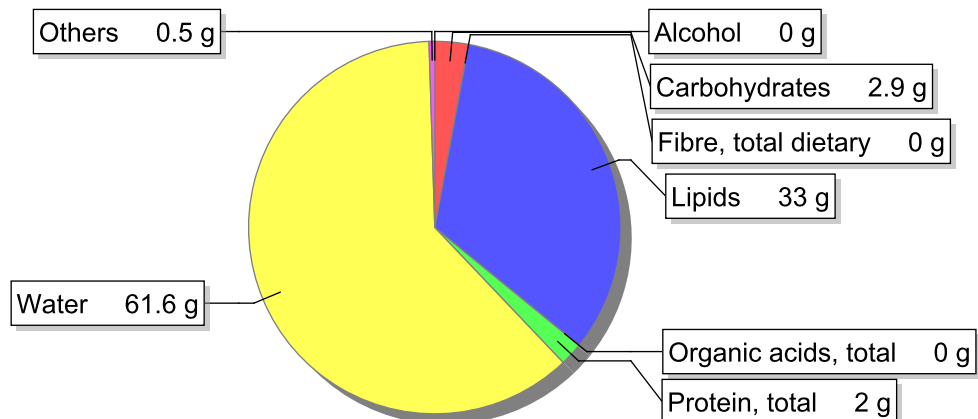


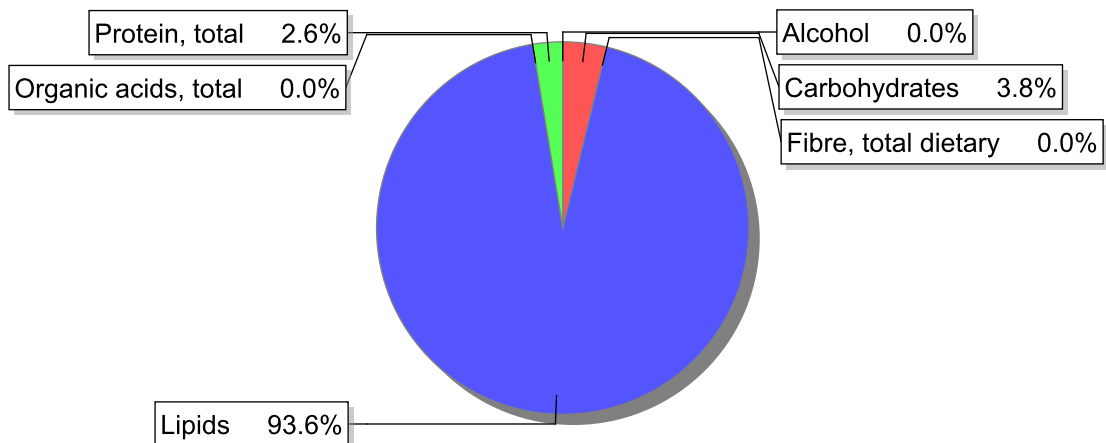
## Food

**Name:** Cream, pasteurized, 33% fat  
**Group:** Milk and milk products  
**Subgroup:** Cream  
**Edible Part:** 100%  
**Code:** IS065  
**FoodEX2 Code:** A02ML

## Composition [g/100g]



## Energy



## Nutritive content per 100g edible portion

Name	Value	Unit	Source(s)
energy kcal, total metabolisable	317	kcal	
energy kJ, total metabolisable	1300	kJ	
fatty acids, total saturated	18.5	g	
fatty acids, total monounsaturated	7.5	g	
fatty acids, total polyunsaturated	0.9	g	
fatty acid 18:2 n-6 cis,cis	0.9	g	
fatty acids, total trans	1.1	g	
sugars, total	2.9	g	57
sucrose	0	g	

Name	Value	Unit	Source(s)
lactose	2.9	g	
oligosaccharides, available	0	g	
starch, total	0	g	
protein, total	2	g	57
alcohol	0	g	
water	61.6	g	57
organic acids, total	0	g	
cholesterol	97	mg	57
vitamin A; retinol equiv from retinol and carotenoid activities	360	µg	
carotene, total (vitamin A precursors)	186	µg	
vitamin D	0.3	µg	
alpha-tocopherol	1.1	mg	
thiamin	0.02	mg	
riboflavin	0.16	mg	
niacin, preformed	0.2	mg	
niacin equivalents, total	0.7	mg	
niacin equivalents from tryptophan	0.5	mg	
vitamin B-6, total	0.03	mg	
vitamin B-12	0.2	µg	
vitamin C	1	mg	
folate, total	7	µg	
ash	0.50	g	
sodium	37	mg	57
potassium	110	mg	57
calcium	32	mg	57
phosphorus	62	mg	57
magnesium	3	mg	57
iron, total	0.1	mg	57
zinc	0.2	mg	57

## Legend

Code	Name
g	gram
kJ	kilojoule
kcal	kilocalorie
mg	milligram
µg	microgram

## References

Id	Reference
57	PIABAD (1993) Programa do Instituto de Alimentação Becel para análise de dietas: programa profissional para computadores pessoais. Lisboa: IAB