

## Food

**Name:** Pork's backfat, lean and fat, slightly salted, boiled, no salt added

**Group:** Meat and meat products, fowl and game meat

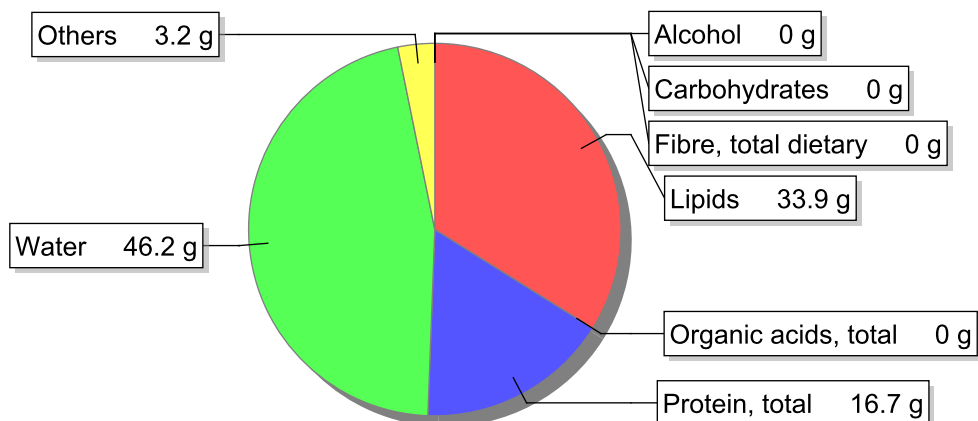
**Subgroup:** Meat

**Edible Part:** 100%

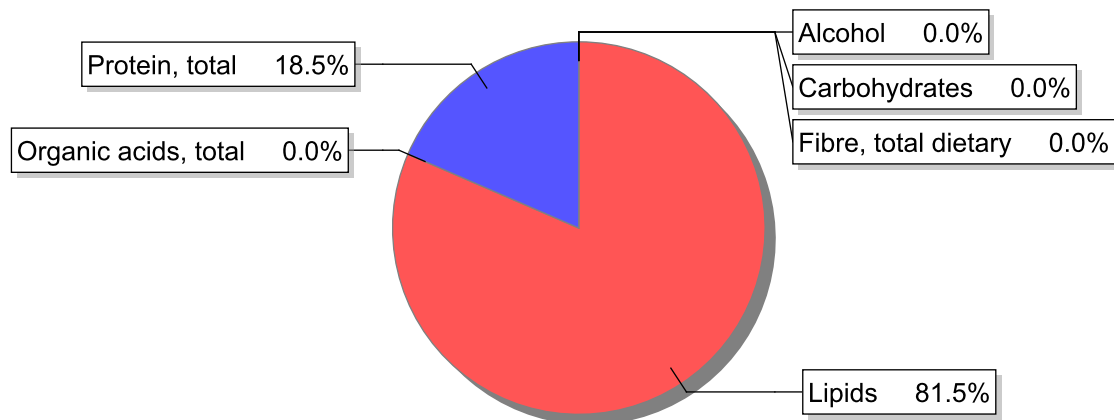
**Code:** IS309

**FoodEX2 Code:** A01VA

## Composition [g/100g]



## Energy



## Nutritive content per 100g edible portion

Name	Value	Unit	Source(s)
energy kcal, total metabolisable	372	kcal	
energy kJ, total metabolisable	1540	kJ	
fatty acids, total saturated	11.4	g	
fatty acids, total monounsaturated	13.1	g	
fatty acids, total polyunsaturated	5.2	g	
fatty acid 18:2 n-6 cis,cis	4.5	g	
fatty acids, total trans	0.2	g	
sugars, total	0	g	
sucrose	0	g	

Name	Value	Unit	Source(s)
<b>lactose</b>	0	g	
<b>oligosaccharides, available</b>	0	g	
<b>fibre, total dietary</b>	0	g	
<b>protein, total</b>	16.7	g	
<b>alcohol</b>	0	g	
<b>water</b>	46.2	g	
<b>organic acids, total</b>	0	g	
<b>cholesterol</b>	71	mg	
<b>vitamin A; retinol equiv from retinol and carotenoid activities</b>	0	µg	
<b>carotene, total (vitamin A precursors)</b>	0	µg	
<b>vitamin D</b>	0	µg	
<b>alpha-tocopherol</b>	0	mg	
<b>thiamin</b>	0.11	mg	
<b>riboflavin</b>	0.17	mg	
<b>niacin, preformed</b>	1.9	mg	
<b>niacin equivalents, total</b>	3.7	mg	
<b>niacin equivalents from tryptophan</b>	1.8	mg	
<b>vitamin B-6, total</b>	0.09	mg	
<b>vitamin B-12</b>	1.4	µg	
<b>vitamin C</b>	0	mg	
<b>folate, total</b>	2.9	µg	
<b>ash</b>	3.20	g	
<b>sodium</b>	860	mg	
<b>potassium</b>	180	mg	
<b>calcium</b>	17	mg	
<b>phosphorus</b>	78	mg	
<b>magnesium</b>	14	mg	
<b>iron, total</b>	0.4	mg	
<b>zinc</b>	1.9	mg	

## Legend

Code	Name
g	gram
kJ	kilojoule
kcal	kilocalorie
mg	milligram
µg	microgram

## References