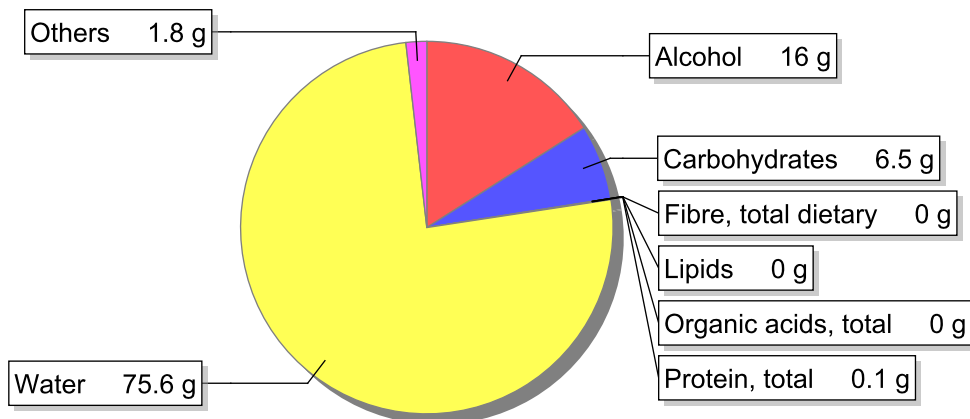


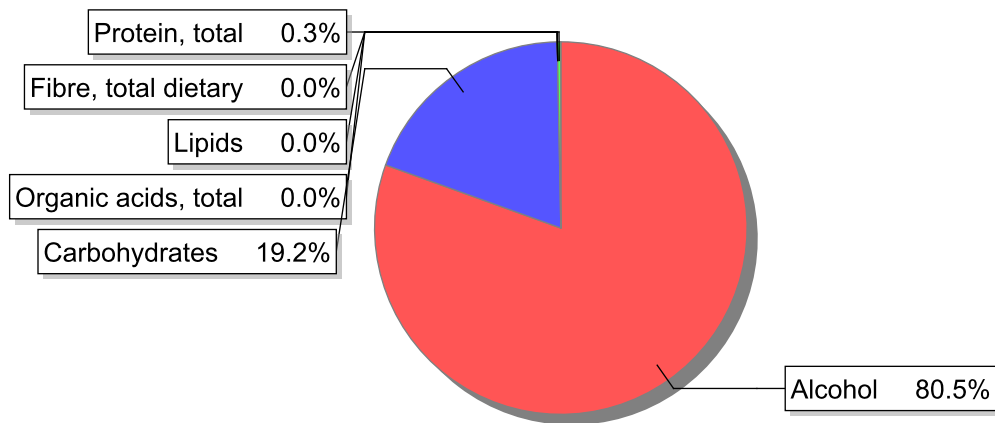
**Food**

**Name:** Port, semi-dry  
**Group:** Drinks  
**Subgroup:** Alcoholic beverages  
**Edible Part:** 100%  
**Code:** IS724  
**FoodEX2 Code:** A03NL

**Composition [g/100g]**



**Energy**



**Nutritive content per 100g edible portion**

Name	Value	Unit	Source(s)
energy kcal, total metabolisable	138	kcal	
energy kJ, total metabolisable	576	kJ	
fatty acids, total saturated	0	g	57
fatty acids, total monounsaturated	0	g	57
fatty acids, total polyunsaturated	0	g	57
fatty acid 18:2 n-6 cis,cis	0	g	57
fatty acids, total trans	0	g	
sugars, total	6.5	g	57
sucrose	1.5	g	

Name	Value	Unit	Source(s)
lactose	0	g	
salt	0.0	g	
fibre, total dietary	0	g	57
protein, total	0.1	g	57
alcohol	16	g	57
water	75.6	g	57
organic acids, total	0	g	
cholesterol	0	mg	57
vitamin A; retinol equiv from retinol and carotenoid activities	0	µg	57
carotene, total (vitamin A precursors)	0	µg	57
vitamin D	0	µg	57
alpha-tocopherol	0	mg	
thiamin	0.01	mg	57
riboflavin	0.02	mg	57
niacin, preformed	0.1	mg	57
niacin equivalents, total	0.1	mg	
niacin equivalents from tryptophan	0	mg	
vitamin B-6, total	0.01	mg	57
vitamin B-12	0	µg	57
vitamin C	0	mg	57
folate, total	0	µg	
ash	0.25	g	
sodium	11	mg	57
potassium	120	mg	57
calcium	5	mg	57
phosphorus	15	mg	57
magnesium	11	mg	57
iron, total	0.7	mg	57
zinc	0.2	mg	57

## Legend

Code	Name
g	gram
kJ	kilojoule
kcal	kilocalorie
mg	milligram
µg	microgram

## References

Id	Reference
57	PIABAD (1993) Programa do Instituto de Alimentação Becel para análise de dietas: programa profissional para computadores pessoais. Lisboa: IAB