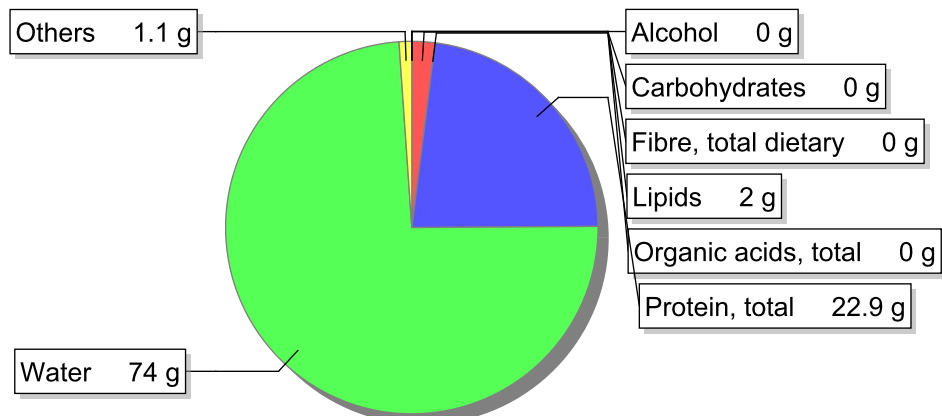


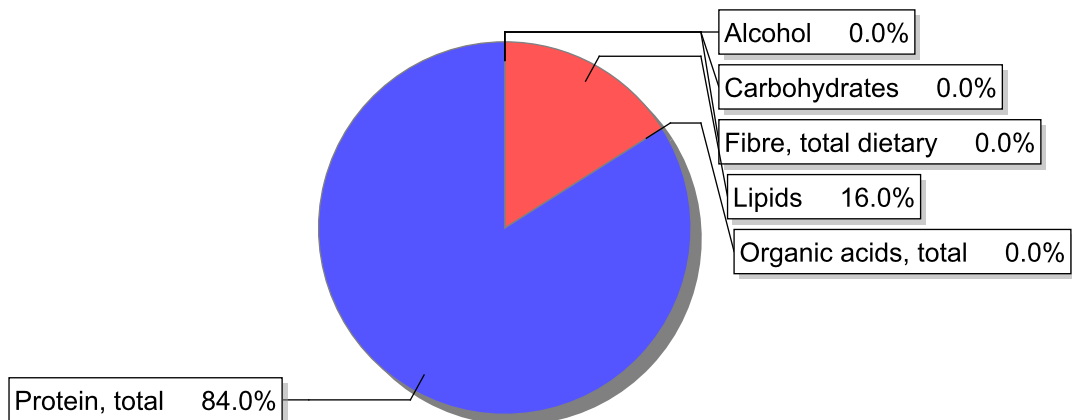
Food

Name: Chicken, whole, meat only, raw
Group: Meat and meat products, fowl and game meat
Subgroup: Fowl and game meat
Edible Part: 64% (Proporção da carcassa de frango cru(carne, pele e ossos))
Code: IS017
FoodEX2 Code: A01SP

Composition [g/100g]



Energy



Nutritive content per 100g edible portion

Name	Value	Unit	Source(s)
energy kcal, total metabolisable	110	kcal	
energy kJ, total metabolisable	463	kJ	
fatty acids, total saturated	0.5	g	
fatty acids, total monounsaturated	0.7	g	
fatty acids, total polyunsaturated	0.4	g	
fatty acid 18:2 n-6 cis,cis	0.4	g	
fatty acids, total trans	0	g	
sugars, total	0	g	
sucrose	0	g	

Name	Value	Unit	Source(s)
lactose	0	g	
oligosaccharides, available	0	g	
fibre, total dietary	0	g	
protein, total	22.9	g	
alcohol	0	g	
water	74	g	
organic acids, total	0	g	
cholesterol	87	mg	
vitamin A; retinol equiv from retinol and carotenoid activities	10	µg	
carotene, total (vitamin A precursors)	0	µg	
vitamin D	0.2	µg	
alpha-tocopherol	0.2	mg	
thiamin	0.14	mg	
riboflavin	0.19	mg	
niacin, preformed	8	mg	
niacin equivalents, total	12	mg	
niacin equivalents from tryptophan	4.3	mg	
vitamin B-6, total	0.37	mg	
vitamin B-12	0.72	µg	
vitamin C	0	mg	
folate, total	11	µg	
ash	1.03	g	
sodium	77	mg	
potassium	380	mg	
calcium	12	mg	
phosphorus	200	mg	
magnesium	27	mg	
iron, total	0.9	mg	
zinc	1	mg	

Legend

Code	Name
g	gram
kJ	kilojoule
kcal	kilocalorie
mg	milligram
µg	microgram

References