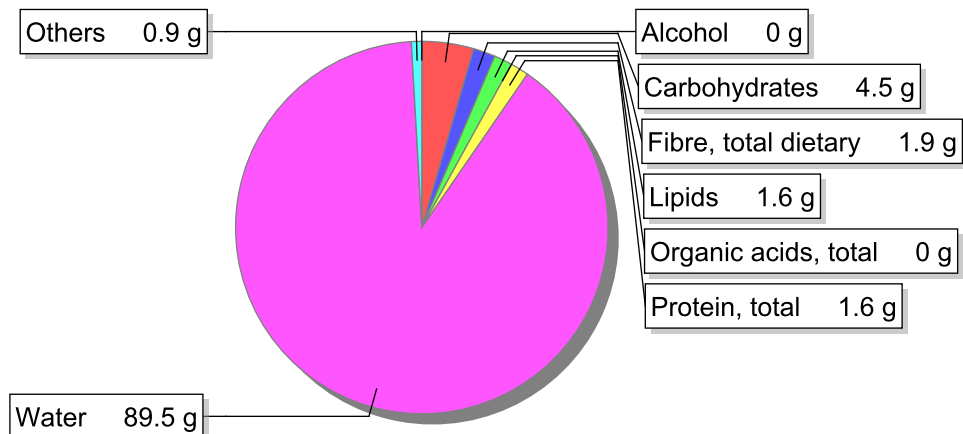


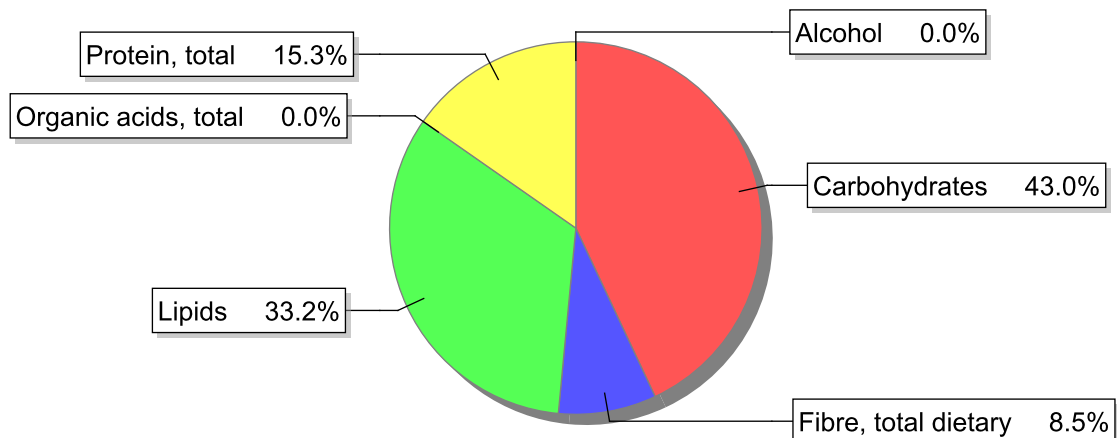
Food

Name: Soup, beans, purée
Group: Soups, sauces and miscellaneous foods
Subgroup: Soups
Edible Part: 100%
Code: IS797
FoodEX2 Code: A041Q

Composition [g/100g]



Energy



Nutritive content per 100g edible portion

Name	Value	Unit	Source(s)
energy kcal, total metabolisable	43	kcal	
energy kJ, total metabolisable	178	kJ	
fatty acids, total saturated	0.2	g	
fatty acids, total monounsaturated	1.2	g	
fatty acids, total polyunsaturated	0.2	g	
fatty acid 18:2 n-6 cis,cis	0.128	g	
fatty acids, total trans	0	g	
sugars, total	0.9	g	
sucrose	0.3	g	

Name	Value	Unit	Source(s)
lactose	0	g	
salt	0.6	g	
fibre, total dietary	1.9	g	
protein, total	1.6	g	
alcohol	0	g	
water	89.5	g	
organic acids, total	0	g	
cholesterol	0	mg	
vitamin A; retinol equiv from retinol and carotenoid activities	66	µg	
carotene, total (vitamin A precursors)	396	µg	
vitamin D	0	µg	
alpha-tocopherol	0.28	mg	
thiamin	0.03	mg	
riboflavin	0.01	mg	
niacin, preformed	0.19	mg	
niacin equivalents, total	0.54	mg	
niacin equivalents from tryptophan	0.27	mg	
vitamin B-6, total	0.04	mg	
vitamin B-12	0	µg	
vitamin C	3.9	mg	
folate, total	16	µg	
ash	0.966	g	
sodium	240	mg	
potassium	88	mg	
calcium	21	mg	
phosphorus	26	mg	
magnesium	13	mg	
iron, total	0.4	mg	
zinc	0.3	mg	

Legend

Code	Name
g	gram
kJ	kilojoule
kcal	kilocalorie
mg	milligram
µg	microgram

References