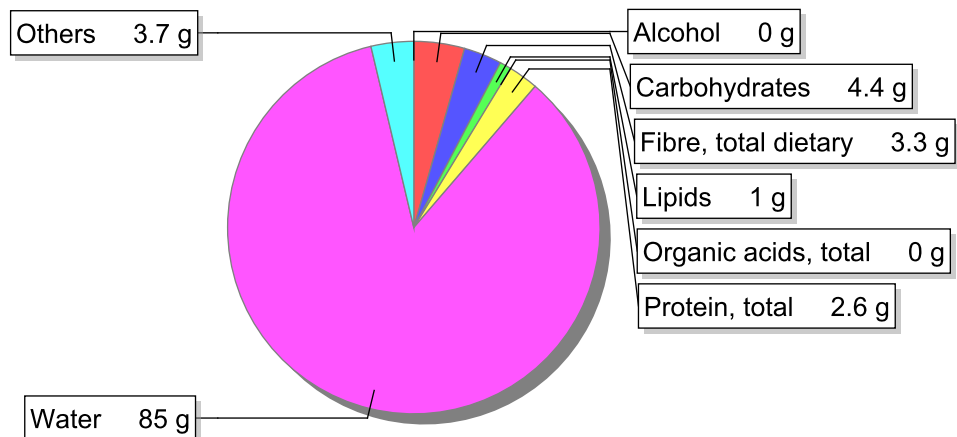


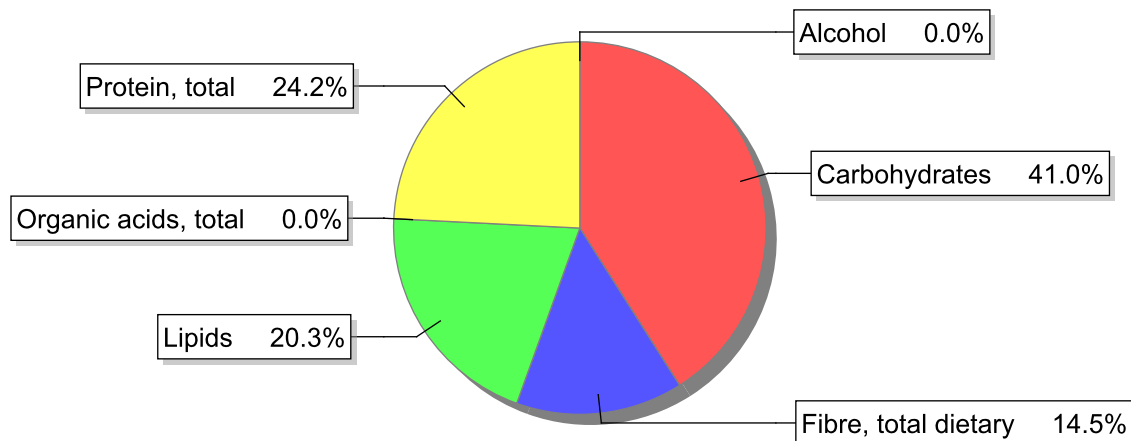
## Food

**Name:** Red sweet pepper paste, "massa de pimentão"  
**Group:** Soups, sauces and miscellaneous foods  
**Subgroup:** Miscellaneous foods (vinegar, baking powder/yeast, stock cubes)  
**Edible Part:** 100%  
**Code:** 214-xx  
**FoodEX2 Code:** A044E

## Composition [g/100g]



## Energy



## Nutritive content per 100g edible portion

Name	Value	Unit	Source(s)
energy kcal, total metabolisable	44	kcal	
energy kJ, total metabolisable	182	kJ	
fatty acids, total saturated	0.2	g	
fatty acids, total monounsaturated	0	g	
fatty acids, total polyunsaturated	0.5	g	
fatty acid 18:2 n-6 cis,cis	0.490	g	
fatty acids, total trans	0	g	
sugars, total	4.1	g	
sucrose	0	g	

Name	Value	Unit	Source(s)
<b>lactose</b>	0	g	
<b>salt</b>	3.3	g	
<b>starch, total</b>	0.2	g	
<b>protein, total</b>	2.6	g	
<b>alcohol</b>	0	g	
<b>water</b>	85	g	
<b>organic acids, total</b>	0	g	
<b>cholesterol</b>	0	mg	
<b>vitamin A; retinol equiv from retinol and carotenoid activities</b>	355	µg	
<b>carotene, total (vitamin A precursors)</b>	2120	µg	
<b>vitamin D</b>	0	µg	
<b>alpha-tocopherol</b>	1.31	mg	
<b>thiamin</b>	0.03	mg	
<b>riboflavin</b>	0.02	mg	
<b>niacin, preformed</b>	0.98	mg	
<b>niacin equivalents, total</b>	1.31	mg	
<b>niacin equivalents from tryptophan</b>	0.33	mg	
<b>vitamin B-6, total</b>	0.51	mg	
<b>vitamin B-12</b>	0	µg	
<b>vitamin C</b>	147	mg	
<b>folate, total</b>	46	µg	
<b>ash</b>	3.86	g	
<b>sodium</b>	1310	mg	
<b>potassium</b>	200	mg	
<b>calcium</b>	15	mg	
<b>phosphorus</b>	39	mg	
<b>magnesium</b>	26	mg	
<b>iron, total</b>	1	mg	
<b>zinc</b>	0.3	mg	

## Legend

Code	Name
g	gram
kJ	kilojoule
kcal	kilocalorie
mg	milligram
µg	microgram

## References